

UNIVERSAL

EX-RAY™ Volt

Model: EXRAY-U BOLT - CC DRUM
UNIVERSAL Speedometer Bracket Mount
10mm Speed BOLT Sensor for Villager 6-8 Pass

EX-RAY™ Volt

Model: EXRAY-U BOLT
UNIVERSAL Speedometer Bracket Mount
10mm Speed BOLT Sensor

EX-RAY™ Volt

Model: EXRAY-U BOLT-JAKES BRK
UNIVERSAL Speedometer Bracket Mount
10mm Speed BOLT Sensor for Jakes Disc Brake

EX-RAY™ Volt

Model: EXRAY-U BOLT-EZ-RXV
UNIVERSAL Speedometer Bracket Mount
10mm Speed BOLT Sensor for EZGO-RXV only

EX-RAY™ Volt

Model: EXRAY-U XRT-850E (ELEC)
UNIVERSAL Speedometer Bracket Mount
Speed TAB Sensor

EX-RAY™ Volt

Model: EXRAY-U XRT-850G (GAS)
UNIVERSAL Speedometer Bracket Mount
10mm Speed BOLT Sensor

CNC MACHINED BRACKET

EX-RAY™ Volt

Model: EXRAY-MEZ
EZGO Speedometer
1.51" CNC Machined Mount, 10mm Speed BOLT

EX-RAY™ Volt

Model: EXRAY-MEZ-RXV
EZGO-RXV Speedometer ONLY
1.59" CNC Machined Mount, 10mm Speed BOLT

EX-RAY™ Volt

Model: EXRAY-MCC
ClubCar Speedometer
1.66" CNC Machined Mount, 10mm Speed BOLT

EX-RAY™ Volt

Model: EXRAY-MCCP
ClubCar Speedometer, Plastic Tube Cover
1.76" CNC Machined Mount, 10mm Speed BOLT

EDT LLC

PO BOX 190
Merlin, OREGON 97532, USA

www.edt-exray.com

Innovative Products made in the USA

Phone: 541-441-6123

FAX: 541-479-4605

Questions? Email info@edt-exray.com



CNC MACHINED BRACKET

EX-RAY™ Volt

Model: EXRAY-MXRT-850E (ELEC)
ClubCar XRT (E) Speedometer,
1.76" CNC Machined Mount, 10mm Speed TAB

EX-RAY™ Volt

Model: EXRAY-MXRT-850G (GAS)
ClubCar XRT (G) Speedometer,
1.76" CNC Machined Mount, 10mm Speed BOLT

EX-RAY™ Volt

Model: EXRAY-MYAM
Yamaha Speedometer,
1.71" CNC Machined Mount, 10mm Speed BOLT

NOTES:

>EXRAY-MEZ will fit most Howell Spirit, Fairplay, and STAR carts.
Check steering tube diameters before ordering.

>CNC Brackets are 0.010" wider than measurements
>**Plastic tubes over steering columns require MCCP brackets.**

>CC-XRT-850G has special bracket for axle, different than CC-850E
ORDER: KIT-CC-850G (GAS)

>JAKES DISC BRAKE & BAD BOY BUGGIES DISC BRAKE requires
special Stainless Steel brackets:
ORDER: KIT-JAKES-DISC-BRK

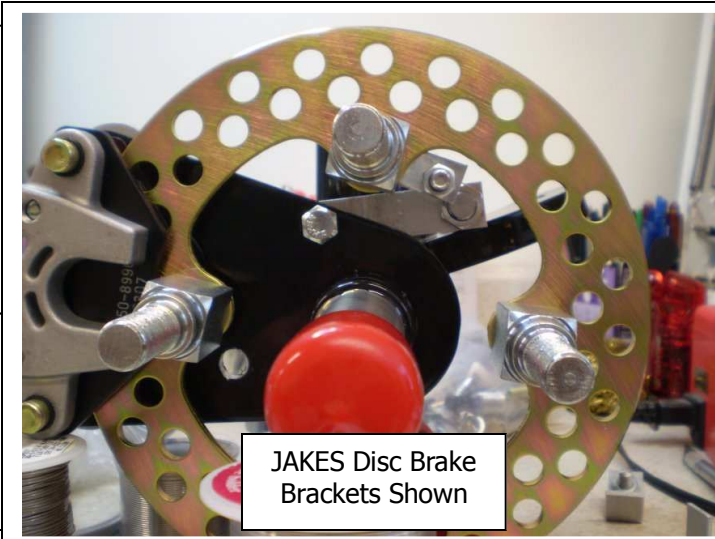
>CLUB CAR VILLAGER 6-8 Passenger with FRONT DRUM brakes
comes with Universal mounting bracket and temperature extension
cable. **TO ORDER CNC BKT: KIT-MCC bracket separately.**

SPECIAL KITS – BRACKETS ONLY

KIT-JAKES-& BAD BOY BUGGIES w/DISC BRAKE

Bracket Hardware for Jakes Disc Brake and
Bad Boy Buggies Front Disc Brakes
Bracket & Hardware ONLY for the
10mm Speed BOLT Sensor

**Note: These parts are included in the complete
speedometer EXRAY-UBOLT-JAKES-BRK.**
>This kit is for those customers who ordered a standard
UBOLT or CNC Speedometer and need the brackets. Used
Jakes Disc Brake /OR/ BAD Boy Buggies Disc Brake.



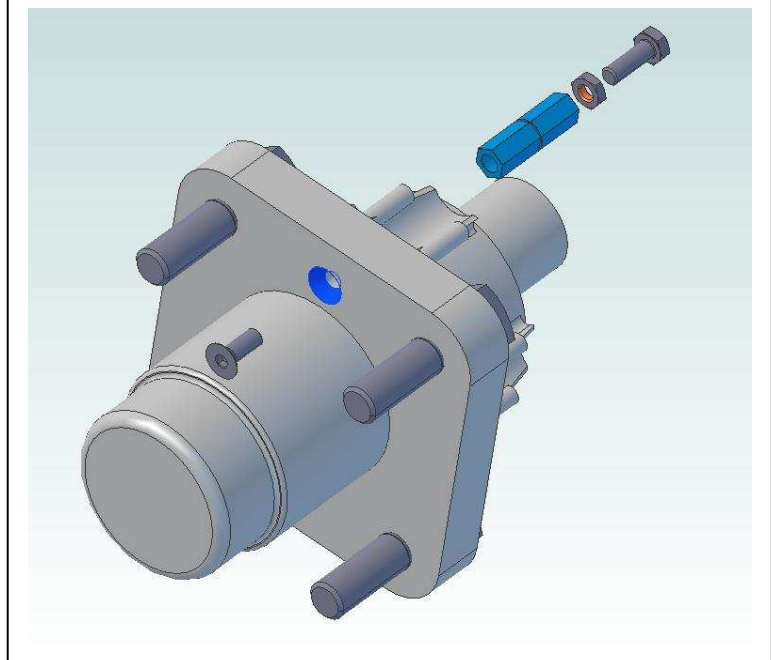
KIT-CC-850G (GAS)

Bracket Hardware ONLY for
Club Car XRT-850G

Magnet Mounting Hardware ONLY for the 6MM
Magnet used with 10MM Speed BOLT Sensor

**Note: These parts are included in the complete
speedometer EXRAY-UBOLT-XRT-850G.**

>This kit is for those customers who ordered a standard
UBOLT or EXRAY-MXRT CNC Speedometer and need the
parts for the 850G Hub. This 850G (Gas) hub is different
than other carts and requires this magnet mount method.



KIT-EZGO-RXV BRACKET

Bracket Hardware ONLY for
EZGO RXV AXLE

Bracket & Hardware ONLY for the 10mm Speed
BOLT Sensor

**Note: These parts are included in the complete
speedometer EXRAY-UBOLT-EZ-RXV and the
EXRAY-MEZ-RXV (CNC Bracket) models.**
>This kit is for those customers who ordered a standard
UBOLT and need the brackets for the RXV Axle.

Warning: The CNC machined bracket must use the RXV
version for the 1.59" diameter steering column.

